

Fab Speed Limited

Skelmanthorpe Business Park
Saville Road, Skelmanthorpe
Huddersfield, HD8 9ED

Tel: 03301 222 123

e-mail: sales@fabspeed.uk

website: www.fabspeed.uk



Agrément Certificate

17/5475

Product Sheet 3 Issue 1

FAB SPEED BRICK FACING UNITS

PRO-LOCK PREFABRICATED BRICK FACING UNITS WITH MECHANICAL RESTRAINTS FOR STAINLESS-STEEL LINTELS AND BOLT-UP UNITS

This Agrément Certificate Product Sheet⁽¹⁾ relates to the Pro-Lock Prefabricated Brick Facing Units with Mechanical Restraints for Stainless-Steel Lintels and Bolt-Up Units, for use on external walls. The adhesive component and mechanical restraints have been assessed only as an adhesive and restraint for the bonding of brick slips and the substrate, and this Certificate does not cover the performance of the lintel itself, or the bolt-up units.

(1) Hereinafter referred to as 'Certificate'.

The assessment includes

Product factors:

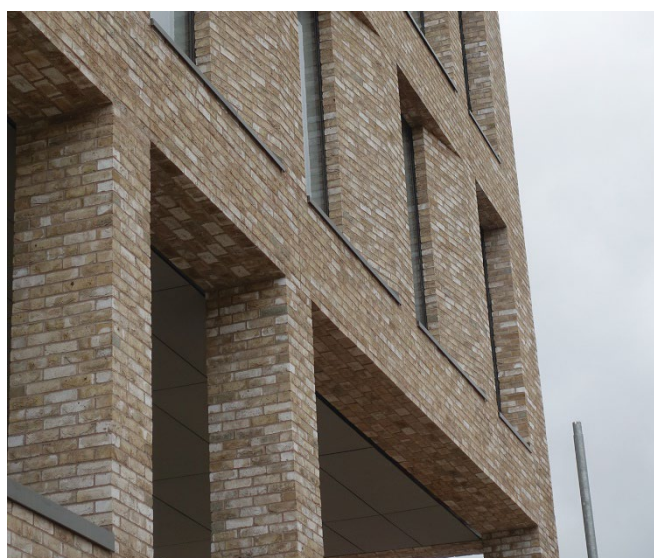
- compliance with Building Regulations
- compliance with additional regulatory or non-regulatory information where applicable
- evaluation against technical specifications
- assessment criteria and technical investigations
- uses and design considerations

Process factors:

- compliance with Scheme requirements
- installation, delivery, handling and storage
- production and quality controls
- maintenance and repair

Ongoing contractual Scheme elements†:

- regular assessment of production
- formal 3-yearly review



KEY FACTORS ASSESSED

- Section 1. Mechanical resistance and stability
- Section 2. Safety in case of fire
- Section 3. Hygiene, health and the environment
- Section 4. Safety and accessibility in use
- Section 5. Protection against noise
- Section 6. Energy economy and heat retention
- Section 7. Sustainable use of natural resources
- Section 8. Durability

The BBA has awarded this Certificate to the company named above for the adhesive component and mechanical restraints of the Pro-Lock Prefabricated Brick Facing Units with Mechanical Restraints for Stainless-Steel Lintels and Bolt-Up Units described herein. The adhesive component and mechanical restraints have been assessed by the BBA as being fit for their intended use provided they are installed, used and maintained as set out in this Certificate.

On behalf of the British Board of Agrément

Date of issue: 11 April 2024

Hardy Giesler
Chief Executive Officer

This BBA Agrément Certificate is issued under the BBA's Inspection Body accreditation to ISO/IEC 17020. Sections marked with † are not issued under accreditation.

The BBA is a UKAS accredited Inspection Body (No. 4345), Certification Body (No. 0113) and Testing Laboratory (No. 0357).

Readers MUST check that this is the latest issue of this Agrément Certificate by either referring to the BBA website or contacting the BBA directly.

The Certificate should be read in full as it may be misleading to read clauses in isolation.

Any photographs are for illustrative purposes only, do not constitute advice and should not be relied upon.

British Board of Agrément

1st Floor, Building 3, Hatters Lane
Croxley Park, Watford
Herts WD18 8YG

©2024

tel: 01923 665300
clientservices@bbacerts.co.uk
www.bbacerts.co.uk

SUMMARY OF ASSESSMENT AND COMPLIANCE

This section provides a summary of the assessment conclusions; readers should refer to the later sections of this Certificate for information about the assessments carried out.

Compliance with Regulations

Having assessed the key factors, the opinion of the BBA is that the adhesive component and the mechanical restraint between the brick slips and stainless steel substrate of the Pro-Lock Prefabricated Brick Facing Units with Mechanical Restraints for Stainless-Steel Lintels and Bolt-Up Units, if installed, used and maintained in accordance with this Certificate, can satisfy or contribute to satisfying the relevant requirements of the following Building Regulations:



The Building Regulations 2010 (England and Wales) (as amended)

Requirement:	A1	Loading
Comment:		The adhesive component and mechanical restraints can contribute to satisfying this Requirement. See section 1 of this Certificate.
Requirement:	7(1)	Materials and workmanship
Comment:		The adhesive component and mechanical restraints are acceptable. See sections 8 and 9 of this Certificate
Regulation:	7(2)	Materials and workmanship
Comment:		The adhesive component and mechanical restraints are unrestricted by this Regulation. See section 2 of this Certificate.



The Building (Scotland) Regulations 2004 (as amended)

Regulation:	8(1)(2)	Fitness and durability of materials and workmanship
Comment:		The adhesive component and mechanical restraints can contribute to a construction satisfying this Regulation. See sections 8 and 9 of this Certificate.
Regulation:	9	Building standards – construction
Standard	1.1	Structure
Comment:		The adhesive component and mechanical restraints can contribute to satisfying this Standard with respect to clause 1.1.1 ⁽¹⁾⁽²⁾ . See Section 1 of this Certificate.
Standard:	7.1(a)	Statement of sustainability
Comment:		The adhesive component and mechanical restraints can contribute to satisfying the relevant requirements of Regulation 9, Standards 1 to 6, and therefore will contribute to a construction meeting a bronze level of sustainability as defined in this Standard.
Regulation:	12	Building standards – conversion
Comment:		All comments given for the adhesive component and mechanical restraints under Regulation 9, Standards 1 to 6, also apply to this Regulation, with reference to clause 0.12.1 ⁽¹⁾⁽²⁾ and Schedule 6 ⁽¹⁾⁽²⁾
		(1) Technical Handbook (Domestic).
		(2) Technical Handbook (Non-Domestic).



The Building Regulations (Northern Ireland) 2012 (as amended)

Regulation:	23(1)(a)(i)	Fitness of materials and workmanship
Comment:	(iii)(b)(i)	The adhesive component and mechanical restraints are acceptable. See sections 8 and 9 of this Certificate.

Regulation: 23(2)
Comment:

Fitness of materials and workmanship
The adhesive component and mechanical restraints are unrestricted by this Regulation. See section 2 of this Certificate.

Regulation: 30
Comment:

Stability
The adhesive component and mechanical restraints can contribute to satisfying this Regulation. See section 1 of this Certificate.

Fulfilment of Requirements

The BBA has judged the adhesive component and mechanical restraints of the Pro-Lock Prefabricated Brick Facing Units with Mechanical Restraints for Stainless-Steel Lintels and Bolt-Up Units to be satisfactory for use as described in this Certificate. The adhesive component and mechanical restraints have been assessed only as an adhesive and restraint for the bonding of brick slips and the substrate, and this Certificate does not cover the performance of the lintel itself, or the bolt-up units.

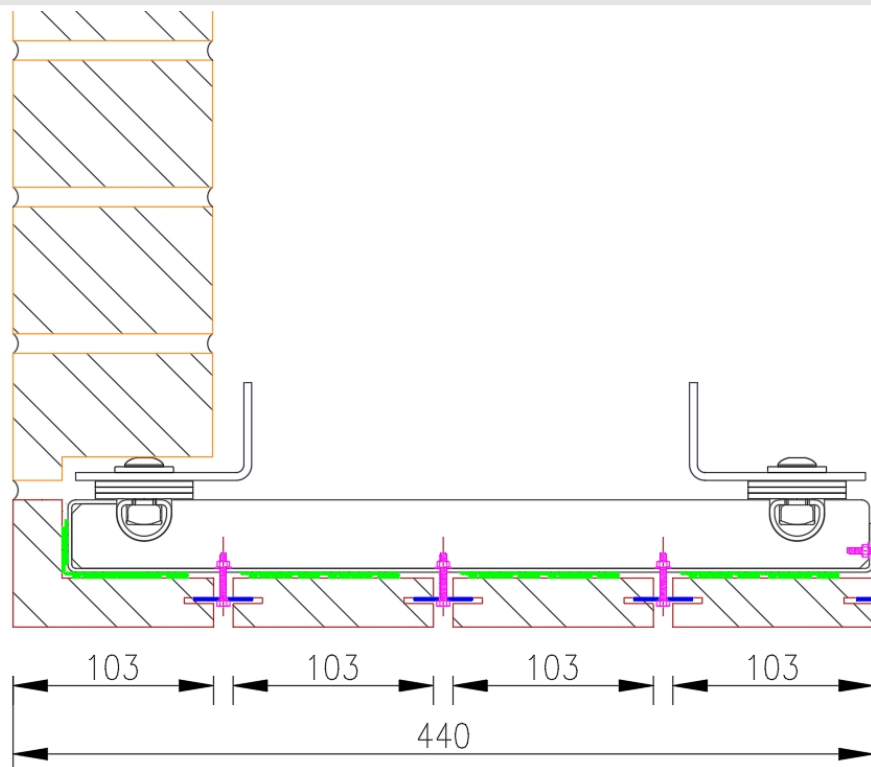
ASSESSMENT

Product description and intended use

The Certificate holder provided the following description for the product under assessment. Pro-Lock Prefabricated Brick Facing Units with Mechanical Restraints for Stainless-Steel Lintels and Bolt-Up Units ⁽¹⁾ consists of M4 X 30 mm and/or 40 mm nut and bolts (Grade 1.4301) and a resin-bonded process for attaching brick slips to the surface of non-perforated stainless-steel units, using a two-part gap-filling epoxy adhesive (See Figure 1).

(1) Bolt-up units are non-loadbearing perforated metal trays that provide various hanging brick soffit details and are held in place via mechanical fixings to slots provided in the masonry support systems.

Figure 1 Cross-section of Pro-Lock Prefabricated Brick Facing Units with Mechanical Restraints for Stainless-Steel Lintels and Bolt-Up Units



Ancillary Items

The Certificate holder recommends the following ancillary items for use with the product, but these materials have not been assessed by the BBA and are outside the scope of this Certificate:

- Bricks to BS EN 771-1 : 2011. Other bricks not covered by this Standard can also be used, but they must be confirmed as suitable for the required end use by separate assessment. The Certificate holder can advise on suitable brick specifications but such advice and products are outside the scope of this Certificate.
- The lintels must conform to the requirements of BS EN 845-2 : 2013 and be made from stainless steel to BS EN 10088-1 : 2014 (grades 1.4003, 1.4301 or 1.4404). The bolt-up units are made from the same types of steel.

Product assessment – key factors

The product was assessed for the following key factors, and the outcome of the assessment is shown below. Conclusions relating to the Building Regulations apply to the whole of the UK unless otherwise stated.

1 Mechanical resistance and stability

Data were assessed for the following characteristics.

1.1 Tensile strength

1.1.1 The result of a tensile test is given in Table 1.

Table 1 Tensile test results

Product assessed	Assessment method	Requirement	Result
Mechanical Pro-Lock Fixed Brick Slip Units (on a stainless steel substrate)	BS EN 1015-12 : 2000	Value achieved	0.22 N·mm ⁻²

1.1.2 On the basis of data assessed, the tensile bond to stainless steel and brick slips is satisfactory.

2 Safety in case of fire

Data were assessed for the following characteristics.

2.1 Reaction to fire

2.1.1 A steel-clad assembly using the Pro-Lock adhesive and mechanical restraints covered by this Certificate was tested for reaction to fire, and the classification achieved is given in Table 2.

Table 2 Reaction to fire test result

Product assessed	Assessment method	Construction	Requirement	Result
Steel-clad assembly, using the Pro-Lock adhesive	BS EN 13501 : 2007	Steel substrate, 450 g·m ⁻² , adhesive, 22.5 mm Harthill Red brick slips, and Pre-Mix Silo pointing mortar ⁽¹⁾	Value achieved	A2-s1-d0

(1) Test report WF 415154 issued by Warringtonfire; copies are available from the Certificate holder on request.

2.1.2 On the basis of data assessed, the construction in Table 2 will be unrestricted in terms of building height and proximity to a relevant boundary by the documents supporting the national Building Regulations.

2.1.3 However, restrictions on the overall construction may apply, depending on the reaction to fire classification achieved by the build-up, which must be established on a case-by-case basis.

2.1.4 The classification and permissible areas of use for constructions other than that given in Table 2 of this Certificate must be established in accordance with the documents supporting the national Building Regulations.

3 Hygiene, health and the environment

Not applicable.

4 Safety and accessibility in use

Not applicable.

5 Protection against noise

Not applicable.

6 Energy economy and heat retention

Not applicable.

7 Sustainable use of natural resources

Not applicable.

8 Durability

8.1 The potential mechanisms for degradation and the known performance characteristics of the materials in this product were assessed.

8.2 Specific test data were assessed for the following.

Table 3 Tensile test results after weathering

Product assessed	Assessment method	Requirement	Result
Mechanical Pro-Lock Fixed Brick Slip Units	BS EN 1015-12 : 2000 and Annex M of EAD 090062-00-0404 : 2018 (cyclical Heat/Rain, Heat/Cold, and Freeze/Thaw)	Value achieved	0.22 N·mm ⁻²

8.3 Service life

Under normal service conditions, the adhesive bond will have a life of at least 30 years, provided it is designed, installed and maintained in accordance with this Certificate and the Certificate holder's instructions.

PROCESS ASSESSMENT

Information provided by the Certificate holder was assessed for the following factors:

9.1 Design

9.1.1 The design process was assessed by the BBA, and the following requirements apply in order to satisfy the performance assessed in this Certificate.

9.1.2 Units incorporating the adhesive and mechanical restraints must be designed and installed in accordance with the requirements of the national Building Regulations and conventional good practice.

9.1.3 The type of facing brick chosen for a particular exposure situation must comply with PD 6697 : 2019, Table 15.

9.1.4 Brick slips must be pointed only when the full load has been applied to the unit.

9.2 Installation

The adhesive and mechanical restraints are applied in a factory-controlled environment.

9.3 Workmanship

Practicability of installation was assessed by the BBA, on the basis of the Certificate holder's information. To achieve the performance described in this Certificate, installation of the product must be carried out under factory conditions, under regular surveillance by the BBA.

9.4 Maintenance and repair

9.4.1 The bond between the brick facing and the units is durable and does not require maintenance.

9.4.2 Should damage to the bonded bricks occur, the damaged section must be removed back to sound substrate and repaired. The Certificate holder must be consulted on the technique to be used, but such advice is outside the scope of this Certificate.

10 **Manufacture**

10.1 The production processes for the product have been assessed, and provide assurance that the quality controls are satisfactory according to the following factors:

10.1.1 The manufacturer has provided documented information on the materials, processes, testing and control factors.

10.1.2 The quality control operated over batches of incoming materials has been assessed and deemed appropriate and adequate.

10.1.3 The quality control procedures and product testing to be undertaken have been assessed and deemed appropriate and adequate.

10.1.4 The process for management of non-conformities has been assessed and deemed appropriate and adequate.

10.1.5 An audit of each production location was undertaken, and it was confirmed that the production process was in accordance with the documented process, and that equipment has been properly tested and calibrated.

†10.2 The BBA has undertaken to review the above measures on a regular basis through a surveillance process, to verify that the specifications and quality control operated by the manufacturer are being maintained.

11 **Delivery and site handling**

11.1 The Certificate holder stated that the product is delivered to site in packaging bearing the project reference code, unit type, and production date.

11.2 Delivery and site handling must be performed in accordance with the Certificate holder's instructions and this Certificate, including:

11.2.1 Units must be stored clear of the ground on a dry, level area, and protected from rain and snow until required for use.

11.2.2 Units must be stacked with protective foam between them, and be shrink-wrapped onto pallets and offloaded using fork-lift trucks.

ANNEX A – SUPPLEMENTARY INFORMATION †

Supporting information in this Annex is relevant to the product but has not formed part of the material assessed for the Certificate.

Construction (Design and Management) Regulations 2015

Construction (Design and Management) Regulations (Northern Ireland) 2016

Information in this Certificate may assist the client, designer (including Principal Designer) and contractor (including Principal Contractor) to address their obligations under these Regulations.

Management Systems Certification for production

The management system of the manufacturer has been assessed and registered as meeting the requirements of BS EN ISO 9001 : 2015 by QMS International Ltd (Certificate 14128082).

Bibliography

BS EN 771-1 : 2011 + A1 : 2015 *Specification for masonry units — Clay masonry*

BS EN 845-2 : 2013 + A1 : 2016 *Specification for ancillary components for masonry — Lintels*

BS EN 1015-12 : 2000 *Methods of test for mortar for masonry — Determination of adhesive strength of hardened rendering and plastering mortars and on substrates*

BS EN 13501-1 : 2007 + A1 : 2009 *Fire classification of construction products and building elements — Classification using data from reaction to fire tests*

BS EN 10088-1 : 2014 *Stainless steels — List of stainless steels*

BS EN ISO 9001 : 2015 *Quality management systems — Requirements*

EAD 090062-00-0404 : 2018 – *Kits for External Wall Claddings Mechanically Fixed*

PD 6697 : 2019 *Recommendations for the design of masonry structures to BS EN 1996-1-1 and BS EN 1996-2*

Conditions of Certificate

Conditions

1 This Certificate:

- relates only to the product that is named and described on the front page
- is issued only to the company, firm, organisation or person named on the front page – no other company, firm, organisation or person may hold or claim that this Certificate has been issued to them
- is valid only within the UK
- has to be read, considered and used as a whole document – it may be misleading and will be incomplete to be selective
- is copyright of the BBA
- is subject to English Law.

2 Publications, documents, specifications, legislation, regulations, standards and the like referenced in this Certificate are those that were current and/or deemed relevant by the BBA at the date of issue or reissue of this Certificate.

3 This Certificate will be displayed on the BBA website, and the Certificate Holder is entitled to use the Certificate and Certificate logo, provided that the product and their manufacture and/or fabrication, including all related and relevant parts and processes thereof:

- are maintained at or above the levels which have been assessed and found to be satisfactory by the BBA
- continue to be checked as and when deemed appropriate by the BBA under arrangements that it will determine
- are reviewed by the BBA as and when it considers appropriate.

4 The BBA has used due skill, care and diligence in preparing this Certificate, but no warranty is provided.

5 In issuing this Certificate the BBA is not responsible and is excluded from any liability to any company, firm, organisation or person, for any matters arising directly or indirectly from:

- the presence or absence of any patent, intellectual property or similar rights subsisting in the product or any other product
- the right of the Certificate holder to manufacture, supply, install, maintain or market the product
- actual installations of the product, including their nature, design, methods, performance, workmanship and maintenance
- any works and constructions in which the product is installed, including their nature, design, methods, performance, workmanship and maintenance
- any loss or damage, including personal injury, howsoever caused by the product, including their manufacture, supply, installation, use, maintenance and removal
- any claims by the manufacturer relating to UKCA marking and CE marking.

6 Any information relating to the manufacture, supply, installation, use, maintenance and removal of this product which is contained or referred to in this Certificate is the minimum required to be met when the product is manufactured, supplied, installed, used, maintained and removed. It does not purport in any way to restate the requirements of the Health and Safety at Work etc. Act 1974, or of any other statutory, common law or other duty which may exist at the date of issue or reissue of this Certificate; nor is conformity with such information to be taken as satisfying the requirements of the 1974 Act or of any statutory, common law or other duty of care.